

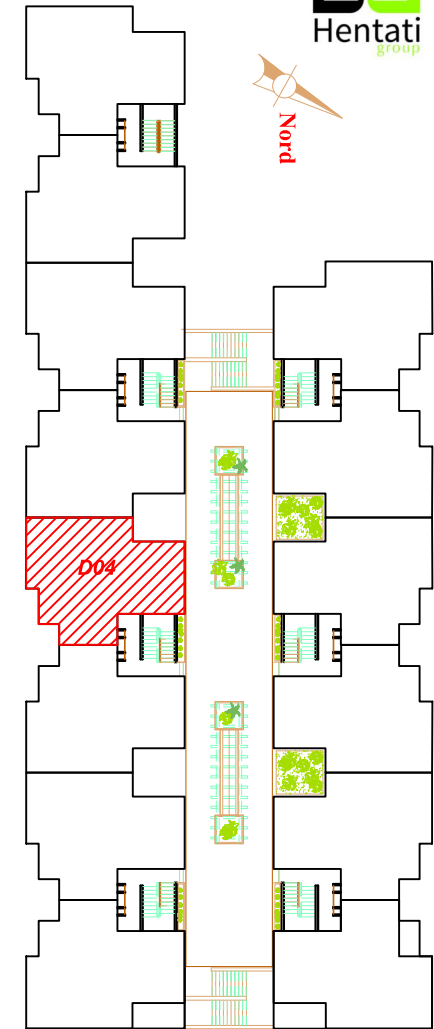
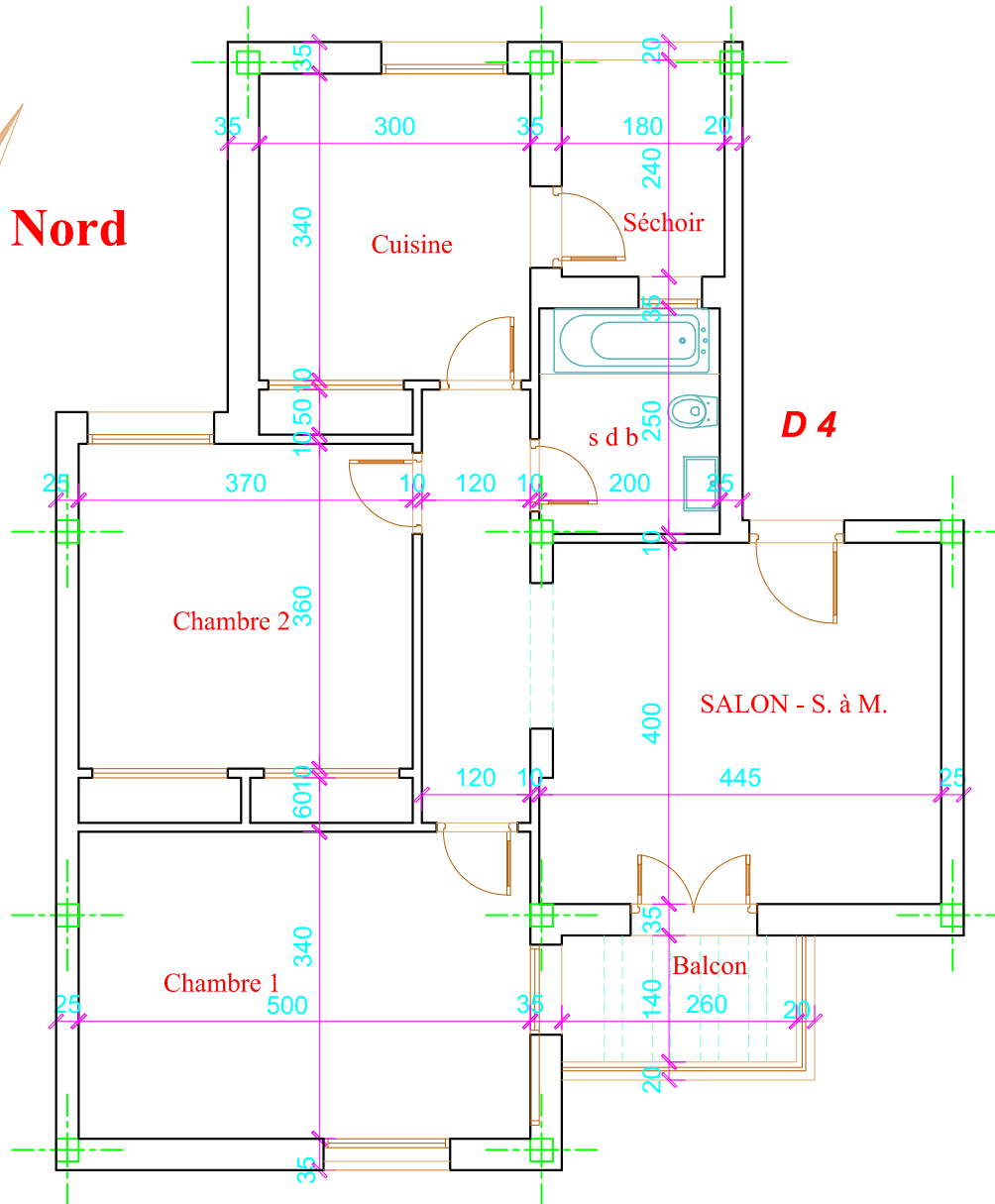
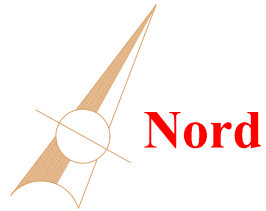


SOCIETE IMMOBILIERE DALIA  
**RESIDENCE DALIA**

CONSTRUCTION D'ENSEMBLE  
RESIDENTIEL ET COMMERCIAL  
sis à **EZZAHROUNI**

TYPE DE LOGEMENT	APPT
NIVEUAX	2ème
BLOC	D

**D.0.4**



Désignation	Surface(m <sup>2</sup> ) approximative
Surface Hors Oeuvre	102.6 m <sup>2</sup>
quote part dans les parties communes	12%
Surface Plancher	115 m <sup>2</sup>